

# GOING GLOBAL

Floodline's expertise in great demand



Floodline Developments Ltd

Lynton House  
Station Approach  
Woking  
Surrey  
GU22 7PY  
UK

01483 770 007

www.floodlinedevelopments.com

## BUILDING WITH NATURE

### Flooding, Water Infrastructure and Developments

Since Floodline's inception a major part of our ethos has been the ability to combine the development aspects of our work with the technical expertise on all matters related to water.

Over the last year we have been invited into projects all over the world where our skills are important as we provide a unique development approach coupled with a very strong technical know-how.

This is important and means that we can for our own sites as well as for our client's sites give a quick technical appraisal on opportunities and obstacles, before creating an implementable development plan.

When evaluating any site it is crucial from an early stage to understand everything from the topography right through to proposed water delivery and discharge solutions.

Our aim is always to create the optimum development potential whatever the end-use, and we look to minimise construction and infrastructure costs, minimise third party involvement and improve the sustainability credentials of any given site.

We are always mindful of the proposed development configuration, geology, groundwater zone issues, water authority and EA requirements, adoptability, infrastructure requirements, operation and maintenance and programme of works.

### Floodline consultancy projects in brief

• **India**

Providing infrastructure design support on a £350million theme park development.

• **Turkey**

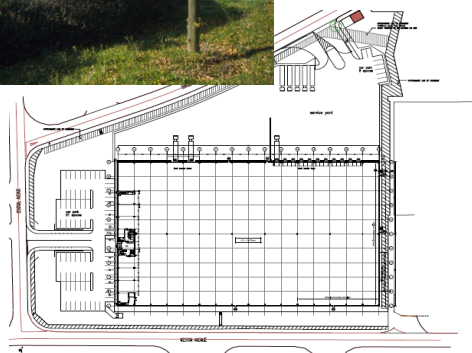
Helping deliver a new spectacular golf resort.

• **Africa**

Floodline is undertaking two exciting developments; a new port facility and a residential development.

• **UK**

Providing flood mitigation advice to Local Governments on catchment wide flood relief schemes.



### Case Study — Change of Use Data Centre, Thurrock

Floodline was commissioned to undertake a Flood Risk Assessment for an existing warehouse site located in the main industrial and distribution area within Thurrock Borough Council.

The existing building was to be refurbished and converted to a Data Centre involving limited structural work.

The building sits fully within a designated floodplain area and Floodline successfully carried out a Sequential Test and produced the FRA report and Drainage Strategy to secure the change of use of the building.

## Sustainable Development Specialists

FOR MORE INFORMATION ON HOW WE CAN ASSIST WITH ANY WATER RELATED ISSUES, FLOOD RISK ASSESSEMENTS, DRAINAGE STRATEGIES & INFRASTRUCTURE REQUIREMENTS ON ANY DEVELOPMENT SITES PLEASE CONTACT FARUK.

**Email: [faruk@floodlinedevelopments.com](mailto:faruk@floodlinedevelopments.com)**

**Phone: 01483 770 007**



Follow us on  
twitter;  
[@floodlinedtd](https://twitter.com/floodlinedtd)



### Faruk Pekbeken *BEng CEng MICE*

Faruk is the Technical Director of Floodline Developments Ltd and has been instrumental in developing the technical expertise within the company.

Having started out with Kier Group, Faruk has worked for the likes of Mouchel, Pell Frischmann and Clarke Bond on innovative schemes such as the Mercedes Benz World at Brooklands and the A380 wing factory near Chester.

Faruk has over 20 years experience in the water sector including project management, site supervision and engineering design experience on major infrastructure projects throughout the UK and overseas with emphasis on strategic flood risk assessments, sustainable drainage systems, infrastructure installations, environmental enhancement, water and wastewater engineering, sustainable development and

utilities assessment.

Faruk manages multiple projects for our private and public sector clients across the industry, planning and delivering sustainable infrastructure, flood protection, water cycle management and dispute resolution.

Faruk also acts as an expert witness on flooding and drainage matters and advises solicitors and re-insurers on cases relating to flood damage and drainage failures.

*"Having spent over 20 years as a consultant with some of the major international firms, I am able to give a unique view on all water related matters whilst not forgetting the all important development aspect of our work and the needs of our clients".*